



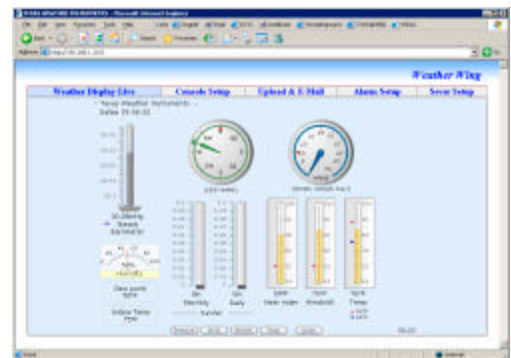
Texas Weather Instruments, Inc.

WeatherWing Micro Web Server

Now, with the WeatherWing, all Texas Weather Instruments weather stations can be part of a network without a local PC. All that is needed is a TWI weather station, a WeatherWing and a network connection via an Ethernet cable or 802.11b WiFi connection. The WeatherWing can function as a self-contained web server, an FTP server and an Email server all at the same time. The WeatherWing is preloaded with a weather program written in Flash to view the active data in a browser either locally or worldwide. To view the WeatherWing in action go to <http://66.138.86.245>. To view data that is uploaded via FTP every minute, go to <http://www.txwx.com/wing/twidata.txt>.



WPS Console



- **Deliver data to the web via a browser, FTP or E-mail.**
- **Control a switch closure via an alarm.**

Using it's FTP server, the WeatherWing is compatible with Weather View 32 Software. WV32 can be set up to function locally or remotely. To set up a remote TWI weather station an Internet connection, a TWI weather station and a WeatherWing is required.

Client Functions

The WeatherWing comes equipped with complete support for the following server / client functions:

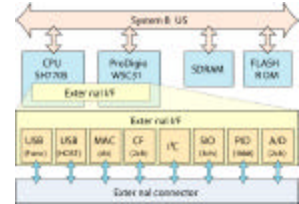
- **HTTP Server w/weather app**
- **FTP Server / Client**
- **DHCP Client**
- **DNS Client**
- **SMTP Client**
- **SNTP Client**
- **TCP/IP**
- **PPP**

The WeatherWing can transfer standard HTML web pages to the Internet as an HTTP server. It can download HTML pages to execute, and can transfer data files using FTP. It can send e-mails (depending on SMTP security settings), including data file attachments, based on timed or external events, and can accept a dynamically allocated IP address from a DHCP server.

I/O & Connectivity

The WeatherWing ships with all the drivers and firmware to support the following external interfaces:

- **10/100 base-T, RJ-45 Connection**
- **1 RS-232 Serial Port**
- **1 Relay Contact Pair**
- **WiFi networking w/optional CF card**



To view the WeatherWing outside the LAN it is best to have an Internet connection with a static IP address. Some Internet connections can be used that have dynamic IP address if they support DDNS services. Configuring the Weather Wing to be seen outside your network will require someone with network experience.

Internal Memory & External Options

WeatherWing internally contains 3 MB of SDRAM (Drive B:) and 512 KB of Flash (Drive C:). The CF Option Slot, discussed below, can also be used for memory expansion.

CF Format Option Slot



The WeatherWing also has an option slot that can accept Compact Flash format adapter cards that cover a wide variety of functions. Currently Texas Weather Instruments only offers the Wireless CF Card for the WeatherWing. With this optional 802.11b adapter installed, the WeatherWing becomes a programmable node in a wireless LAN. With this range of connectivity, and all with a web based interface, the WeatherWing clearly offers new opportunities for innovative solutions to complex problems.

Pricing

WeatherWing standalone is \$499. WeatherWing with a wireless card is \$599.

Specifications

Standard LAN Interface: 10/100 Base-T Ethernet
Optional Wireless Support: CF 802.11b Wireless Adapter Card
Compatible Wireless Cards: Linksys WCF-11, AmbiCom WL1100C-CF
Console Interface: RS-232 Serial, DBS-9 Connector, 19,200 baud
Power Requirement: 5 VDC 270ma, 120VA/C Adapter (Included)
E-Mail limited by STMP server security settings
Unit Dimensions: 4.0"L x 3.3"W x 1.1"D
Operating Range: 0°C to +60°C, 20 to 80% RH